



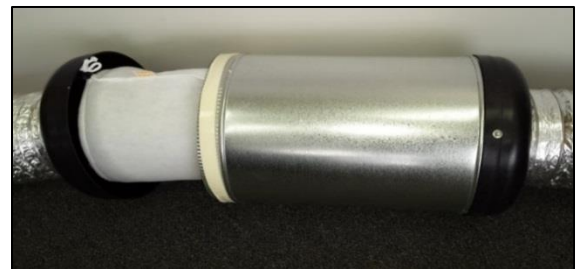
MERV 13 (F7) Filter on DVS fan fitting instructions.

1. Switch off the unit by unplugging the three pin plug near the DVS fan in the ceiling.
2. Remove the old filter from the DVS fan by either undoing the string tie or cutting the cable ties.
3. Use a dry cloth to wipe any fine dust from the fan impellor and inside the fan inlet.
4. Remove the new MERV 13 (F7) filter from the plastic bag. Tuck in the closed corners as shown.
5. Fit the open end of the filter over the collar on the DVS fan and pull the drawstring until it is snug around the collar.
6. Plug the unit back in and turn it on from the control panel in the house. (See the back of this page to reset the filter reminder or the filter warning light).



If you have a large inline filter tube.

1. Switch off the unit by unplugging the three pin plug near the DVS fan in the ceiling.
2. Pull the end tube flange a part. This will have the filter attached to the collar on the inside.
3. Remove the old filter off the inside flange by either undoing the string tie or cutting the cable ties.
4. Remove the new MERV 13 (F7) filter from the plastic bag. Tuck in the closed corners as above.
5. Fit the open end of the filter over the collar on the DVS fan and pull the drawstring until it is snug around the collar.
6. Slide the filter into the housing and fit the end flange back in place on the end of the filter tube.
7. Plug the unit back in and turn it on from the control panel in the house. (See the back of this page to reset the filter reminder or the filter warning light).



See over for resetting the system clock (where applicable), the filter reminder or the filter warning light.

For further assistance please call DVS on 0800 387 387 or www.dvs.co.nz

Resetting the system clock (where applicable), the filter reminder or the filter warning light.

DVS G4

Models distinguished by a small, coloured LED screen.

You will need to reset the filter reminder timer. Press the MENU button then the up and down arrows to select UTILITES, then select Filter Reset, Press OK and follow the screen prompts.

DVS G3

Models distinguished by a square grey, LCD touch screen.

First, you will need to reset the clock. Touch the screen and then follow the prompts.

To reset the filter reminder timer. Press MENU - MORE – MORE – FILTER – Press UP and DOWN arrow until you reach the required months (12). Note, it automatically resets to 12 months.

DVS 1 or 5

Models distinguished by the mid or light Grey key pad. These models also include:

- Summer / winter selection button on the bottom right side of the control panel.
- Warm / cold roof temp indication on the bottom left side.
- There may also be an Air warmer button and/or an Auto summer vent button. However these were optional extras and may not be present.

To reset when the filter light is flashing:

Press and hold down the summer / winter selection button, the air change lights will flick up to 6 lights then disappear, the filter light will go off.

If filter light has stopped flashing:

Press and hold summer / winter select button. The summer / winter lights will flash.

Use up arrow to add 6 complete lights on air change scale (6 lights = 12 months).

DVS 5E

Models distinguished by:

This model has no Warm/Cold indicator. Mid or light Blue coloured key pad.

NOTE: Some DVS5E models do not have a filter reset indicator or any lights, so, no reset is required.

There are **two** versions:

(Take off the switch cover and look for the **V** number on the sticker to one side)

V 1.2.4 (Typically up to 2007)

1. Press and release the up and down arrows at the same time, the summer / winter light will start flashing.
Press the summer / winter select button 2 times. Use the up arrow until you see 6 complete lights showing on the air change indicator (6 lights = 12 months). Press the summer / winter select button once more.
The summer / winter lights will stop flashing and the filter light will disappear.

V 1.2.5 (Typically 2007 onwards)

2. Press and hold summer / winter selection button to reset, this is the **same as the DVS1/5 models explained above.**

DVS Air Transfer (ATS)

To reset the filter light, press POWER and SELECT buttons together. This will automatically reset the filter time out period to 12 months. If the filter light is not flashing, pressing the two buttons together will take the unit into filter time out display mode with both the HEAT and COOL lights flashing. Time until the filter is due for changing will be displayed as a bar graph starting from the green LED upwards. Each full brightness is two months so 8 LEDs is 16 months. We recommend a maximum of 12 months, or 6 full LED's. To exit the display mode press the two buttons again.

For further assistance please call DVS on 0800 387 or www.dvs.co.nz